

### MACHANICAL DATA

- ✧ Case: DO-201AD(DO-27) molded plastic body
- ✧ Terminal: Plated axial leads, solderable per MIL-STD-750, Method 2026
- ✧ Polarity: Color band denotes cathode end
- ✧ Mounting Position: Any
- ✧ Weight: 0.04 ounce, 1.10 grams (approximate)

### ORDERING INFORMATION

- ✧ Device: SB360L
- ✧ Package: DO-201AD(DO-27)
- ✧ Marking: SB360L
- ✧ Material: RoHS compliant
- ✧ Packing: Tape & Ammo
- ✧ Quantity per box: 1,250pcs

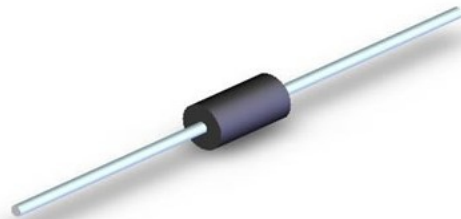
### PIN CONFIGURATION



### FEATURES

- ✧ Metal silicon junction, majority carrier conduction
- ✧ Guardring for overvoltage protection
- ✧ Low power loss, high efficiency
- ✧ High current capability, low forward voltage drop
- ✧ High surge capability
- ✧ Plastic package has Underwriters Laboratory Flammability Classification 94v-0
- ✧ For use in low voltage, high frequency inverters, free wheeling, and polarity protection application

### PACKAGE OUTLINE



### Maximum Ratings and Electrical Characteristics (T<sub>amb</sub>=25°C, unless otherwise specified)

Symbol	Parameter	Value	Units
V <sub>RRM</sub>	Maximum Repetitive Peak Reverse Voltage	60	V
V <sub>RMS</sub>	Maximum RMS Voltage	42	V
V <sub>DC</sub>	Maximum DC Blocking Voltage	60	V
I <sub>O</sub>	Average Rectified Output Current 0.375"(9.5mm) lead length	3.0	A
I <sub>FSM</sub>	Peak Forward Surge Current, 8.3ms single half sine-wave Superimposed on rated load	80	A
V <sub>F</sub>	Maximum Instantaneous Forward Voltage At I <sub>O</sub>	0.60	V
I <sub>R</sub>	Maximum DC Reverse Current @ T <sub>J</sub> =25 At Rated DC Blocking Voltage @ T <sub>J</sub> =100	0.5 50.0	mA
R <sub>OJA</sub>	Typical Thermal Resistance	20	/W
T <sub>J</sub>	Operating Junction Temperature Range	-55 to +150	°C
T <sub>STG</sub>	Storage Temperature Range	-55 to +150	°C

### ELECTRICAL CHARACTERISTICS CURVE

FIG. 1 – TYPICAL FORWARD CURRENT DERATING CURVE

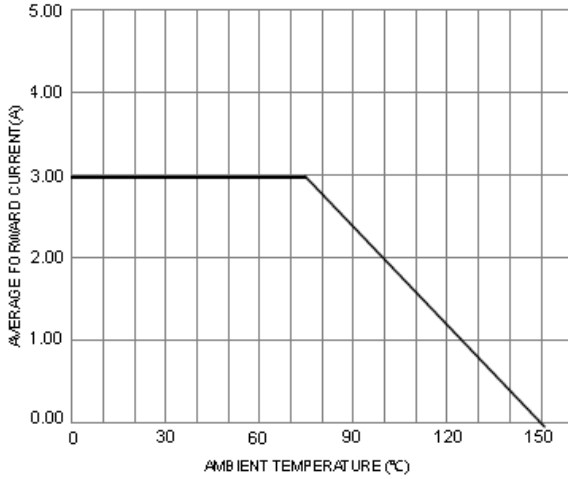


FIG. 2 – TYPICAL FORWARD CHARACTERISTICS

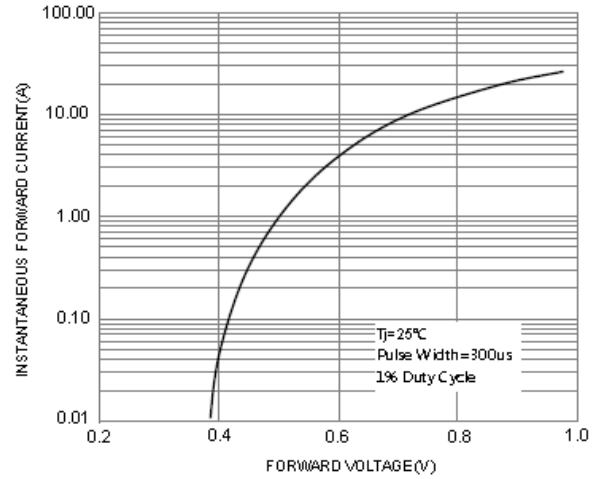


FIG. 3 – MAXIMUM NON-REPETITIVE FORWARD SURGE CURRENT

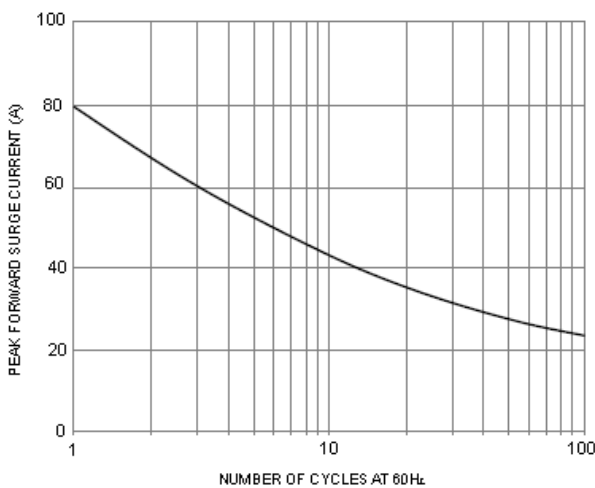
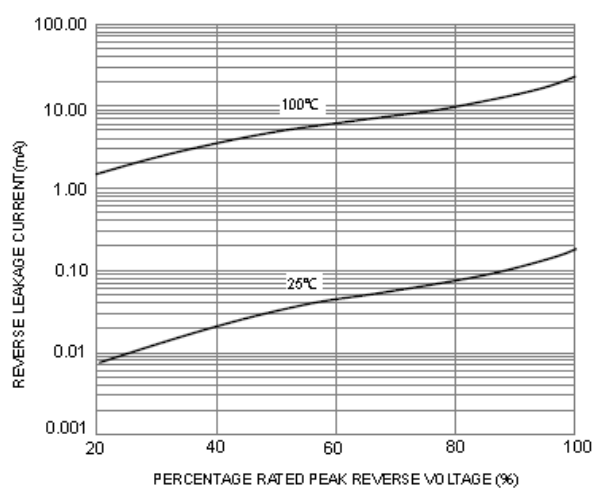
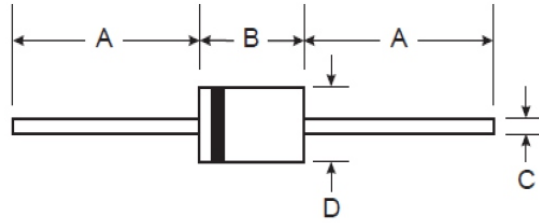


FIG. 4 – TYPICAL REVERSE CHARACTERISTICS



## DO-201AD(DO-27) PACKAGE OUTLINE DIMENSIONS



DO-201AD(DO-27) Plastic				
Dim	Min		Max	
	Inch	mm	Inch	mm
A	1.0	25.4	-	-
B	0.285	7.2	0.375	9.5
C	0.039	1.0	0.052	1.3
D	0.190	4.8	0.210	5.3