

Single Line Uni-directional Transient Voltage Suppressor

DESCRIPTION

The SD20VHHU TVS diode is designed to replace multilayer varistors (MLVs) in portable applications such as cell phones, notebooks, and PDA's. It offers superior electrical characteristics such as low clamping voltage, low leakage current and high surge capability. It is designed to protect sensitive electronic components which are connected to power lines, from over-stress caused by ESD (Electrostatic Discharge), EFT (Electrical Fast Transients) and Lighting.

The ESD20VHHU is in a DFN2020-3L package and will protect one unidirectional line. It may be used to provide ESD protection up to $\pm 30\text{kV}$ (Contact and air discharge) according to IEC61000-4-2, and withstand peak pulse current up to 160A (8/20 μs) according to IEC61000-4-5.

FEATURES

- ✧ Transient protection for high-speed data lines
IEC 61000-4-2 (ESD) $\pm 30\text{kV}$ (Contact)
 $\pm 30\text{kV}$ (Air)
- ✧ Peak power dissipation: 8800W (8/20 μs)
- ✧ Working voltages : 20V
- ✧ Low leakage current
- ✧ Low clamping voltage
- ✧ Ultra-small package (2.0mm \times 2.0mm \times 0.5mm)
- ✧ Solid-state silicon-avalanche technology

MACHANICAL DATA

- ✧ DFN2020-3L package
- ✧ Flammability Rating: UL 94V-0
- ✧ High temperature soldering guaranteed:
260 $^{\circ}\text{C}$ /10s
- ✧ Packaging: Tape and Reel
- ✧ Reel size: 7 inch

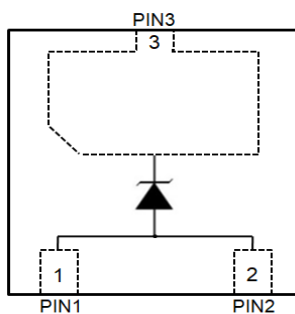
ORDERING INFORMATION

- ✧ Device: SD20VHHU
- ✧ Package: DFN2020-3L
- ✧ Marking: T20 003
- ✧ Material: Halogen free and RoHS compliant
- ✧ Packing: Tape & Reel
- ✧ Quantity per reel: 3,000pcs

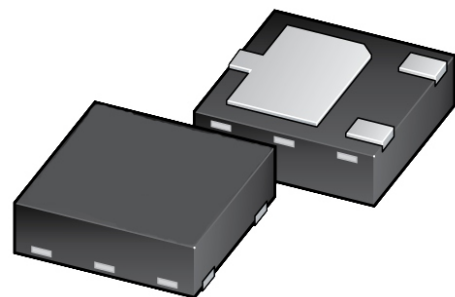
APPLICATIONS

- ✧ Power lines
- ✧ Personal digital assistants (PDA's)
- ✧ Microprocessors based equipment
- ✧ Notebooks, Desktops, and Servers
- ✧ Cell phone Handsets and Accessories
- ✧ Portable Electronics
- ✧ Peripherals

PIN CONFIGURATION



PACKAGE OUTLINE



Single Line Uni-directional Transient Voltage Suppressor

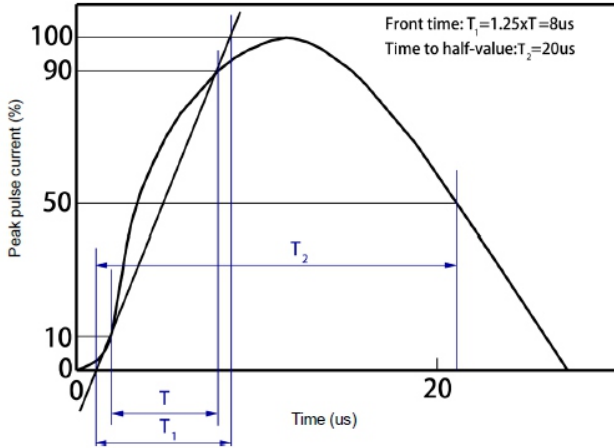
ABSOLUTE MAXIMUM RATING

Symbol	Parameter	Value	Units
V_{ESD}	ESD per IEC 61000-4-2 (Contact)	± 30	kV
	ESD per IEC 61000-4-2 (Air)	± 30	
P_{PP}	Peak Pulse Power (8/20 μ s)	8800	W
T_{OPT}	Operating Temperature	-55~125	$^{\circ}$ C
T_{STG}	Storage Temperature	-55~150	$^{\circ}$ C
T_L	Lead Soldering Temperature	260(10sec)	$^{\circ}$ C

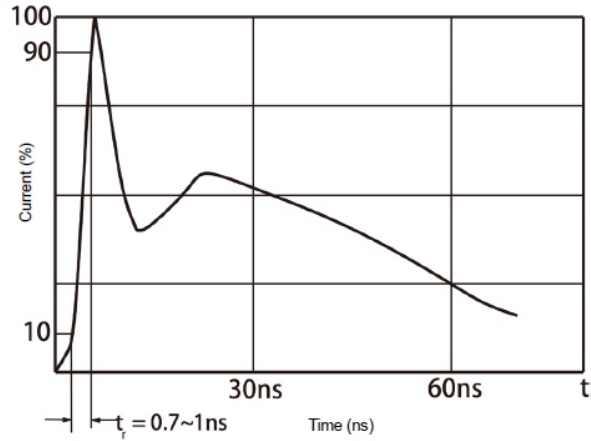
ELECTRICAL CHARACTERISTICS ($T_{amb}=25^{\circ}$ C)

Symbol	Parameter	Test Condition	Min	Typ	Max	Units
V_{RWM}	Reverse Working Voltage				20	V
V_{BR}	Reverse Breakdown Voltage	$I_T = 1mA$	21	23	25	V
I_R	Reverse Leakage Current	$V_{RWM} = 20V$			1	μ A
I_{PP}	Peak Pulse Current	$t_p = 8/20\mu s$			160	A
V_C	Clamping Voltage	$I_{PP} = 60A, t_p = 8/20\mu s$		35	40	V
		$I_{PP} = 130A, t_p = 8/20\mu s$		43	47	V
		$I_{PP} = 160A, t_p = 8/20\mu s$		48	55	V
C_J	Junction Capacitance	$V_R = 0V, f = 1MHz$	300	400	500	pF

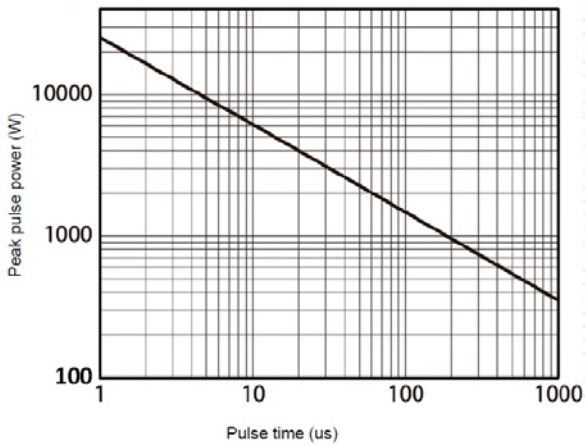
ELECTRICAL CHARACTERISTICS CURVE



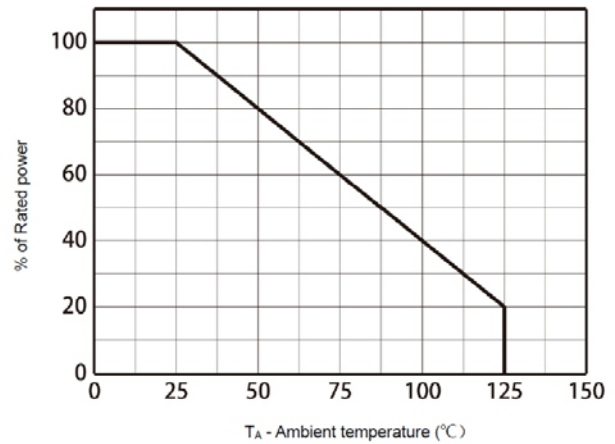
8/20 us waveform per IEC61000-4-5



Contact discharge current waveform per IEC61000-4-2

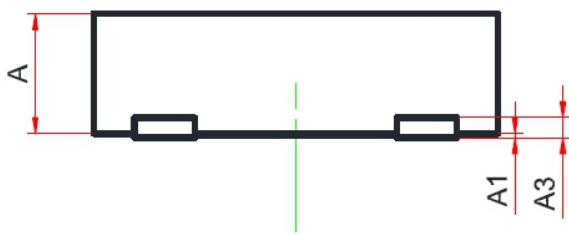
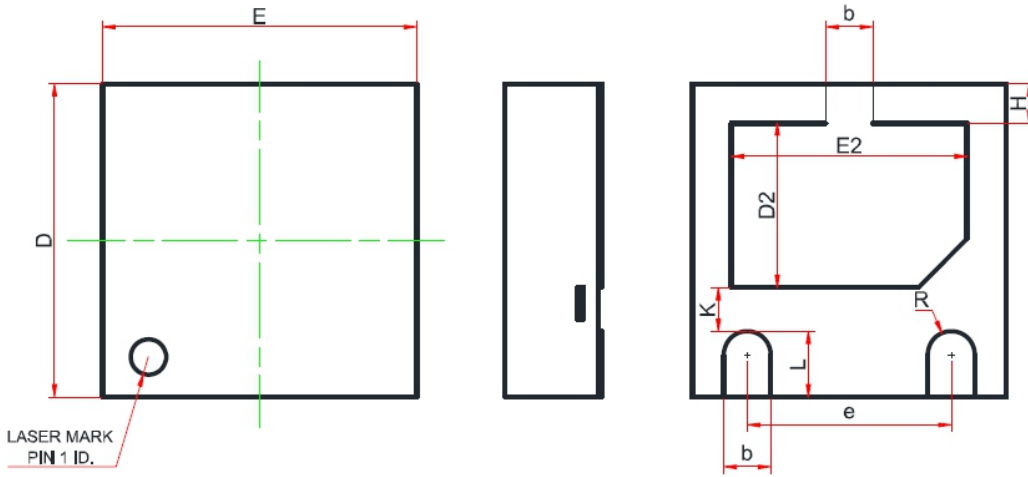


Non-repetitive peak pulse power vs. Pulse time

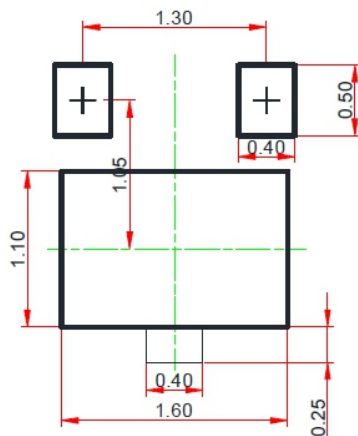


Power derating vs. Ambient temperature

DFN2020-3L PACKAGE OUTLINE DIMENSIONS



Recommend Land Pattern (Unit: mm)



Symbol	Dimensions In Millimeters		
	Min.	Typ.	Max.
A	0.51	0.55	0.60
A1	0.00	0.02	0.05
A3	0.15 REF.		
b	0.25	0.30	0.35
D	1.90	2.00	2.10
E	1.90	2.00	2.10
D2	0.85	1.00	1.10
E2	1.35	1.50	1.60
e	1.20	1.30	1.40
H	0.20	0.25	0.30
K	0.20	0.30	0.40
L	0.35	0.40	0.45
R	0.15	-	-

Note:

This recommended land pattern is for reference purpose only.